

RCS Monitoring Family

HIGHEST PERFORMANCE REAL TIME MONITORING SYSTEM
FOR FM NETWORKS



RCS100 1xRF inputs with the ability to analyze up to 4 channels simultaneously (FM)

PROFESSIONAL MONITORING:

RF ANALYSIS

- Real Time spectrum
- Two ways of operation: channel analysis (by default) or multiple channel polling
- Signal quality measurements: Power, C/N
- Channel analysis: 2 channels analyzed simultaneously
- Multiple channel polling: up to 200 channels
- Alarm log (real time) and representation (time evolution)
- Storage Capacity > 1 Month of logs

FM MEASUREMENTS

- RMS power
- Audio level
- Stereo pilot detection
- RDS decoding
- MPX Spectrum
- Channel naming based on RDS identifier
- L+R, L-R, L, R, RDS level
- Peak deviation
- AM depth
- MPX power
- Pilot level

RDS ANALYSIS

- Analysis of all RDS groups
- Station name extraction (PS)
- Program type extraction (PTYN)
- Date/Time (CT) extraction
- RDS BLER, RDS groups monitoring

AND MUCH MORE...

- 1 x 10/100/1000Mbps (Gigabit Ethernet)
- Full historical measurements with alarm analysis
- Automatic station detection and learning plan
- HTML5 control application
- SNMP v2.0 alarms
- 1 x Euroblock Connector enabled by alarm

OPTIONAL FEATURES

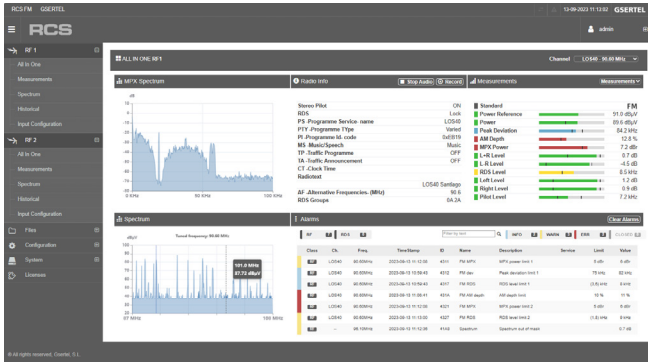
- ✓ Up to 4 channels analyzed simultaneously
- ✓ Dual Power
- ✓ Audio output
- ✓ Audio streaming
- ✓ Audio recording
- ✓ FM full band monitoring
- ✓ Station presence/absence detection

RCS family

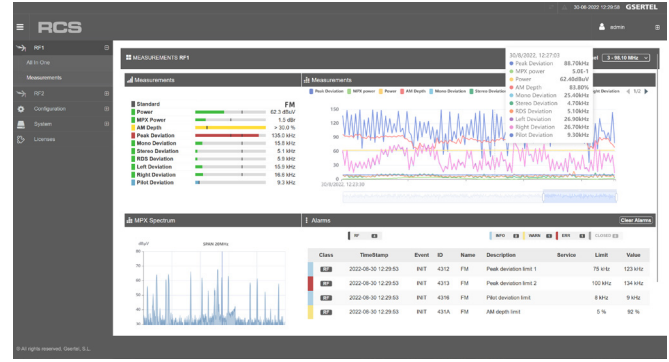
ADVANCED REMOTE MONITORING SYSTEM
FOR FM



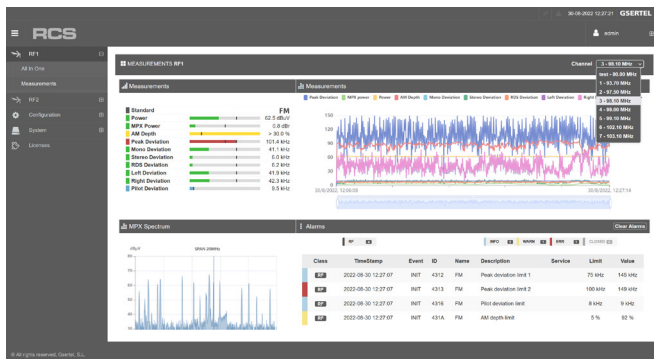
MANAGEMENT SYSTEM



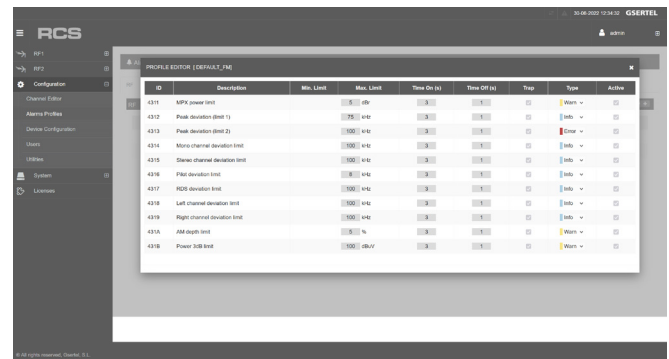
ALL IN ONE
Shows an overview of the channel status on one screen.



RF MEASUREMENTS
The RF Measurements tab contains the evolutionary graph over time of all parameters. The time frame of the graph can be selected. When the mouse is over the graph, the values of all parameters at that point in time are displayed.



RF MEASUREMENTS



ALARMS
The alarms profiles are user-configurable

SPECIFICATIONS

Standard FM

Inputs

RF: 1 x 50 Ω N connector
RF Input Frequency:
87 - 108MHz

Outputs

1 x 10/100/1000Mbps (Gigabit Ethernet)
1 x Euroblock connector
1 x Jack connector for headphones

RF Measurements

21 MHz Spectrum
Power, C/N

FM Measurements

RMS power
Audio level (modulation, L/R, MPX, L+R, LR)
Stereo pilot detection
Peak deviation
AM depth
MPX power
Pilot level

FM Analysis

RDS decoding
Channel naming based on RDS identifier (can be renamed)
Audio recording (opt.)
Audio streaming (opt.)
Audio output (opt.)
Station presence/absence detection (opt.)

Polling feature

Number of channels analyzed: 200
Polling times config: From 1 to 300s

RDS Analysis

Analysis of all RDS groups
Station Name Extraction (PS)
Program Type Extraction (PTYN)
Date/Time (CT) Extraction

Alarms

L/R audio max/min level
Max/Min RDS carrier level
Max/Min stereo carrier level
Presence/absence detection of transmitters
RDS data alarms
Power low
Power fading
Two user-configurable alarms for each measurement

Electrical Characteristics

Input 100 - 240 VAC 50-60Hz 1.4A
-48 VDC (alternative option Ref. 902601)

Mechanical characteristics

1U 19" rackable unit
Size: 482mm W x 348mm D x 41mm H
Working temperature: 0 a 40 °C
Storage temperature.: 0 a 50 °C

Interfaces

1 x USB 2.0
1 x 10/100/1000 Mbps (Gigabit Ethernet)
LCD Graphic display

Control protocols

HTML and SNMP

V.1.3